



पातारासी गाउँपालिका

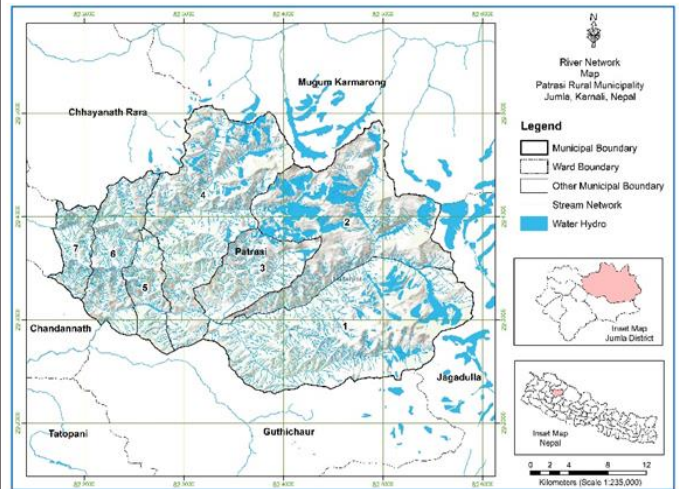


Ensuring Sustainable, inclusive Water through improved capacity of the stakeholders for improved water governance (SUMATRA)

- A case from Patarasi Rural Municipality (P-RM), Jumla, Karnali Province

BRIEF INTRODUCTION: SUMATRA PROJECT

- 🔹 **Partners:** SUMATRA has a consortium of the following three partners:
 1. Karnali Integrated Rural Development and Research Center (KIRDARC), Nepal (Lead)
 2. Mid-West University (MWU), Nepal
 3. IHE Delft, Netherlands
- 🔹 **Funding Source:** Water and Development Partnership Programme (DUPC) of IHE Delft under its Medium-Scale Support Initiative (From Netherland Government)
- 🔹 **Duration:** 3 years (Feb 2023 - Jan 2026)
- 🔹 **Target Groups:** Population of Patarashi Rural Municipality who are highly affected by geographically remoteness, poverty, socially excluded to have equitable access to water services, and are vulnerability to climate change and climate induced effects
- 🔹 **Thematic Area**
 - Water and Health
- 🔹 **Project Components**
 - Research and advocacy
 - Education and training
 - Capacity strengthening
- 🔹 **Location:** Patarashi Rural Municipality, Jumla district, Karnali Province, Nepal
<https://goo.gl/maps/VA4RudAgfbcg6xFO8>



INTERVENTION AREA

Patarashi Rural Municipality (P-RM) is one of the 753 Local Governments of the Federal Democratic Republic Nepal. P-RM which lies in Jumla district of Karnali province of Nepal is located at 2400 m to 6600 m above mean sea level (AMSL) with cold climate all year around.

The P-RM, is divided into total 7 wards with a total population of 16,824 (50.9% female). The density of this rural municipality is 21/km². The P-RM has the highest population amongst the rural municipalities of the Jumla district.

KEY BARRIERS

- 💧 Weak Water Governance
- 💧 Ad-hoc sector plans and ad-hoc resource planning – weak capacity to address the issues related to Water Resource Management (WRM) and inclusive & climate resilient
- 💧 Lack of inclusive policies, plans adapting local context & values for water management and services
- 💧 Ineffective water management and ecological conservation
- 💧 Institutionalization of reliable database on water sources and water schemes and their periodic updating - inequitable distributions of water resources and WASH services
- 💧 Weak institutionalization of knowledge management led to weak extraction of learning and success stories for replication through wider dissemination.
- 💧 No existing practice of gender strategy in the development of integrated plan of Water Supply System (WSS) and WRM

THEORY OF CHANGE: ARTICULATES THE PATHWAY OF SUMATRA

IF we critically analyze how several water sources are managed, distributed, and accessed for quality, quantity, and equitable by different social groups of humans across gender, ethnicity, and other social factors with improved water governance and capacity; **AND** if infrastructure are supported to maintain/upgrade or manage to provide reliable water and sanitation services for domestic and productive needs; **AND** if plans and services are in place to optimize water use, manage fecal sludge and protect & conserve ecology and environment; **AND** if the appropriate policies for improving water governance are developed and implemented together with enhanced capacity for proper channeling of learning from practices for wider sharing for replications; **THEN** sustainable water, and environment management will support development and build resilience with equity on Patarashi Rural Municipality

IMPACT

An integrated approach to water management and conservation of ecological and environment resources, refined and tested through formulation of plans in a project site with improved public health, livelihoods and status of ecological resources with generation of knowledge resources for local governments to lead and community to own the interventions.

OBJECTIVE

To improve Patarasi's water management for improved access of water stressed and marginalized communities to water and sanitation services with sustainable water resources through improved capacity of the stakeholders for water governance.

OUTCOMES

- 💧 **OUTCOME 1** - Improved governance for sustainable water management.
- 💧 **OUTCOME 2** - Delivered equitable and inclusive safely managed water services based on WRM Plans as action research for water conservation and livelihood improvement and demonstrated ways of protecting and augmenting water sources
- 💧 **OUTCOME 3** - Empowered communities (right holders) raised voices to advocate for equitable WASH services from service providers/duty bearers with proper water management.
- 💧 **OUTCOME 4** - Documentation of research findings and learnings of the project through knowledge sharing and management for wider replication.

KEY FEATURES

- 💧 Water Resource Management through One Water Lens
- 💧 Research and Advocacy for Improved Water Governance
- 💧 Institutional capacity for Ecologically Resilient WASH Services
- 💧 Education and training for Community Empowerment for Practice Based Advocacy
- 💧 Partnership and Joint Learning for Knowledge Management

INTERVENTION APPROACH

- 💧 Improved governance
- 💧 Capacity strengthening
- 💧 Ecological and environmental sustainability
- 💧 Responsive for GESI
- 💧 Knowledge Management for replication

KEY PRINCIPLES

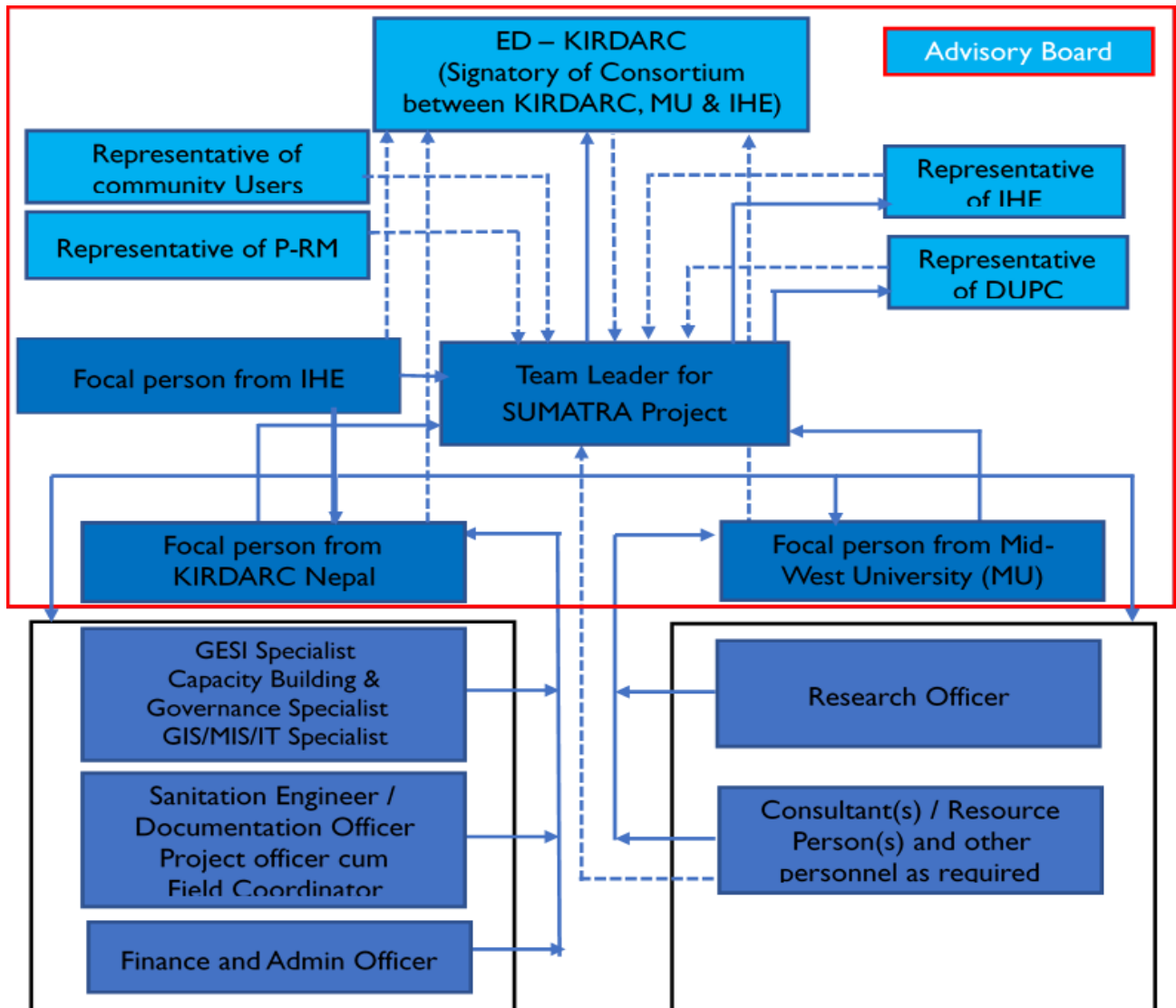
- 💧 Human Rights Based Approach to Development
- 💧 Leave No One Behind
- 💧 Enable System Thinking (EST) From One Water and GESI Lens
- 💧 Holistic And System Wide Development Vision
- 💧 Payment Of Environment/ Ecological Services (PES)
- 💧 Social Accountability and Responsiveness

INTERVENTION SUMMARY

- 💧 Local leadership for their ownership of the initiatives
- 💧 Formulate acts/policies, guidelines and integrated plans (WRM, WASH and CSP)
- 💧 Promote Water Conservation
- 💧 Initiate Water Budgeting
- 💧 Develop GESI Strategy
- 💧 Ensure social accountability
- 💧 Adopt Participatory and Evidence Based Advocacy
- 💧 Academic Research works/ study(s) and Action Research works on water saving and linkages to livelihood
- 💧 Document Indigenous Knowledge to protect and conserve ecologically & environmentally significant areas
- 💧 Develop Short Courses/ Manuals/ Curriculum Updates
- 💧 Knowledge management through online courses/seminars/webinars/learning exchanges.

An integrated approach to water management and conservation of ecological and environment resources, refined and tested through formulation of plans in a project site with improved public health, livelihoods and status of ecological resources with generation of knowledge resources for LGs to lead and community to own the interventions.

SUMATRA'S MANAGEMENT APPROACH



TEAM OF SUMATRA

Contact Us

Karnali Integrated Rural Development and Research Centre (KIRDARC) Nepal,
 House No: 501/30-28, Sikali Marga, Sanepa,
 Lalitpur Metropolitan City – 2, Lalitpur, Nepal
 PO Box No. 20482, Kathmandu,
 Tel: 977-1-5548321, 5548040, Fax: 977-1-5549093
 Toll Free Number: 16600109109
 Email: kirdarc@kirdarc.org
 Website: www.kirdarc.org